

MC LED Player User Manual



Mooncell

Shenzhen Mooncell Electronics Co., Ltd.

Add: 501/503, Shenzhen IC Design & Application Industrial Park, 1089 Chaguang Road, Xili Town, Nanshan District, Shenzhen

Web: <http://www.mooncell.com.cn>

Tel: 0755-23975634.0755-23975637

Fax: 0755-82821265

Introduction

MC LED Player is self developed software of Mooncell. It applies to all kinds of LED display program editing and playing. What's more, it is a simple, easy to learn, and full function software, which is used to check and play documents, various format images, office documents, media, Video and Flash files, multi time modes, calendar files, and synchronizes all above to LED devices.

Software environment & Operating system:

WindowsNT/XP/Vista/Win7/Win8

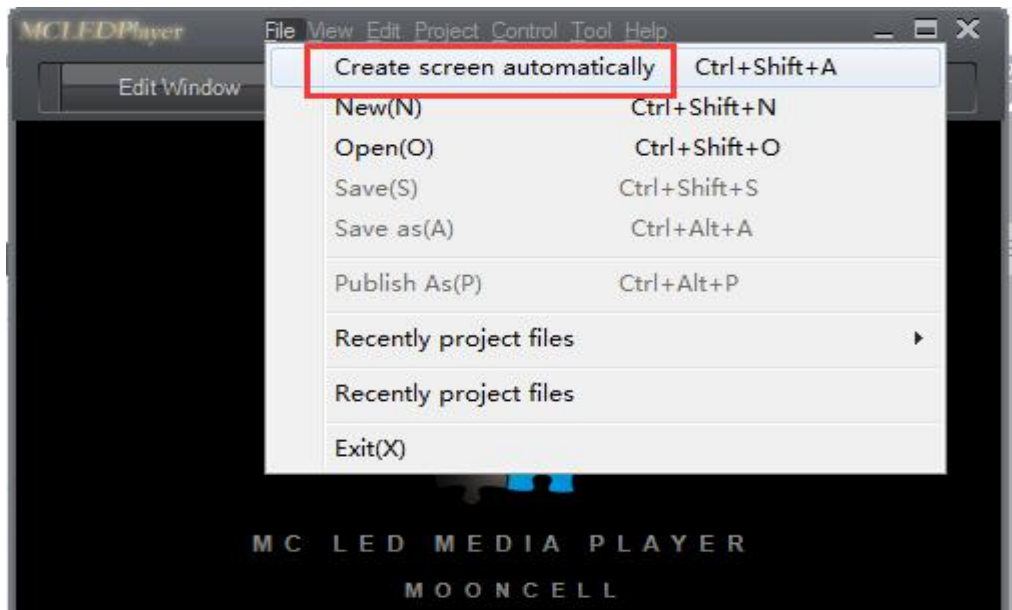
Installation and Initialization

Put the install CD into CD-ROM, then search and double-click the setup.exe file 'MC LED Player.exe' to finish installing. After that, double-click the shortcut on the Desk. The shortcut image shows:

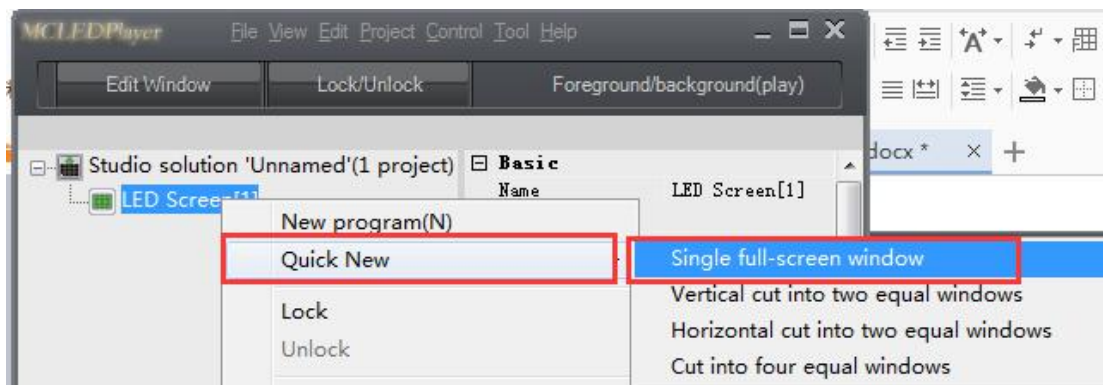
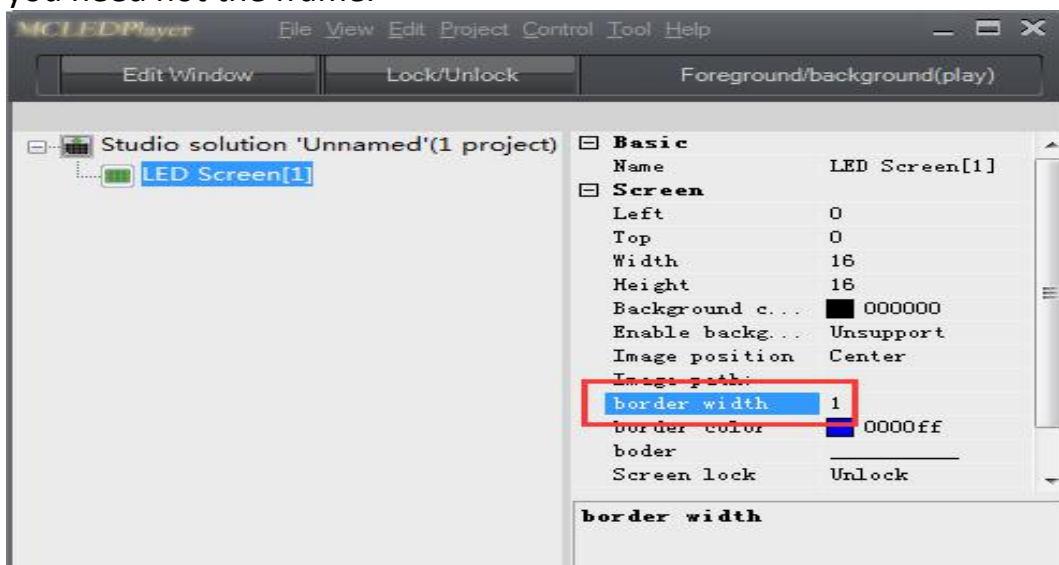


1.Create a new Studio Program

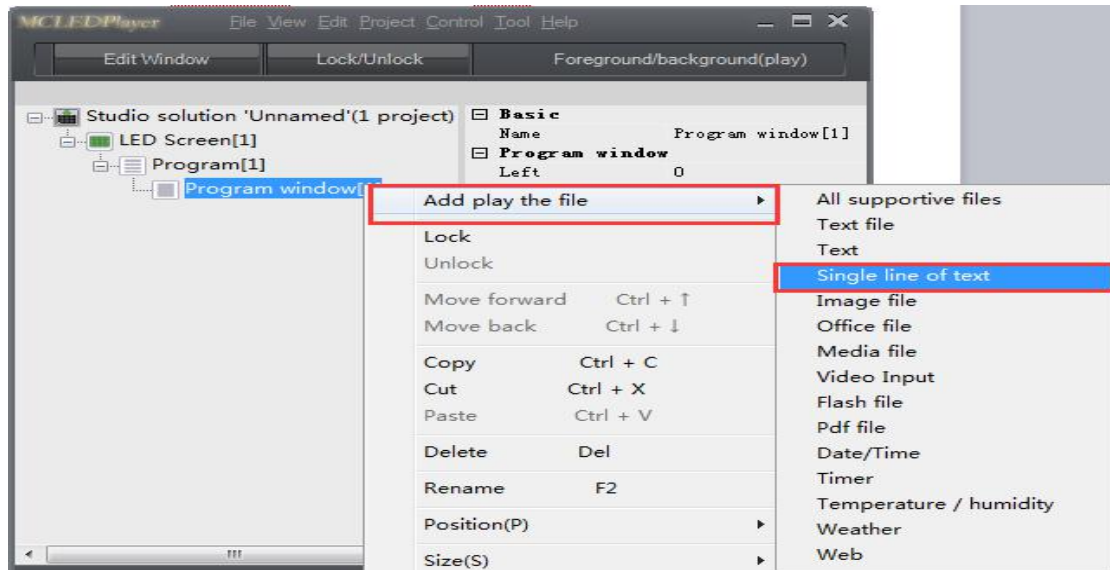
1.1 Click the 'File' menu, then select the button 'create screen automatically', to create a screen, whose size is the same as driver file.



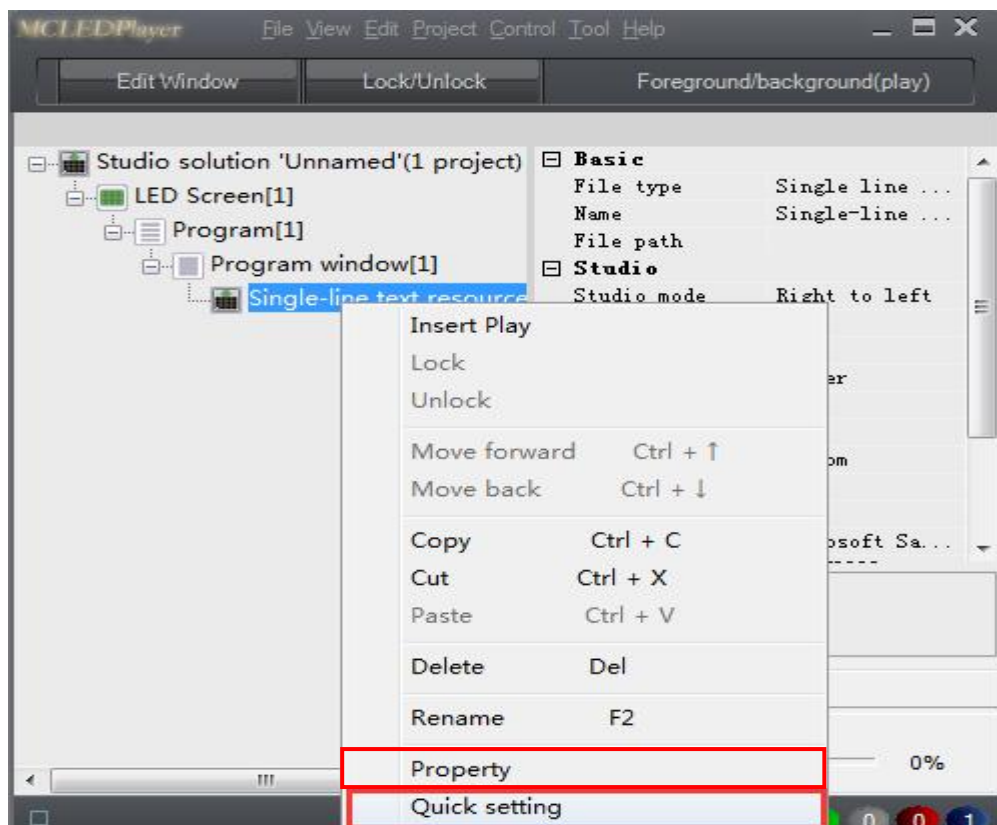
1.2 Right click the 'LED screen'-'Quick New'-'Single full-screen window', to create a new playing window, and adjust the border width to zero, if you need not the frame.

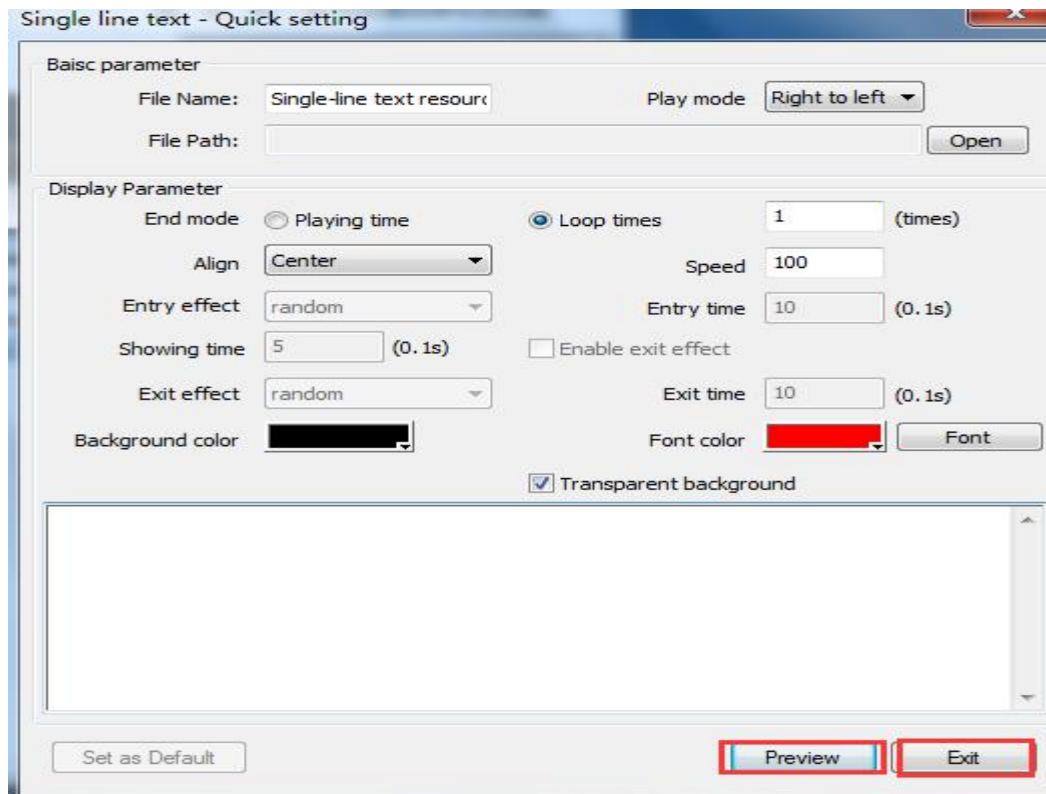


1.3 Right click the 'Program window'-'Add play the file'-'Single line of text'.



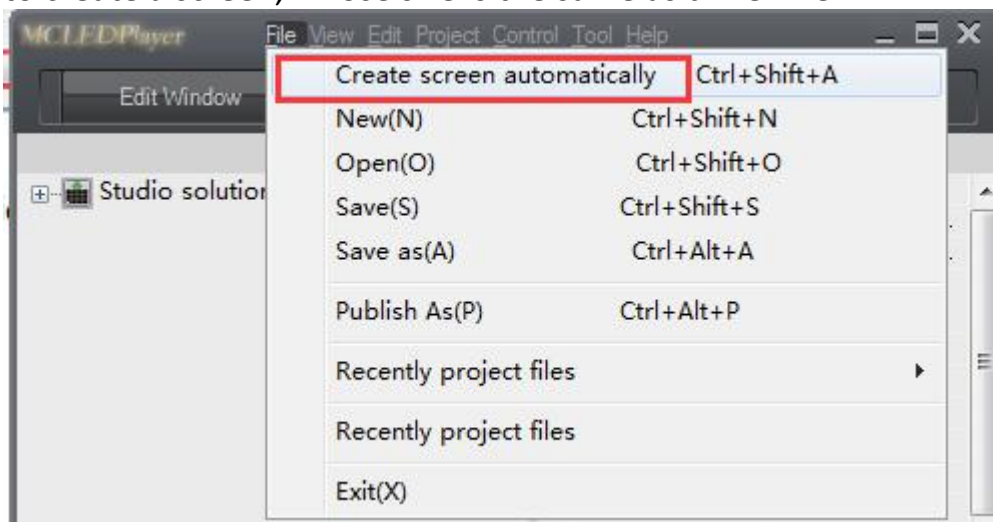
1.4 Right click Single-line text, click 'Property' or 'Quick setting' as you need, then click 'preview' to check the displaying of the large screen meets the requirements or not, if it does, then you could sign out.



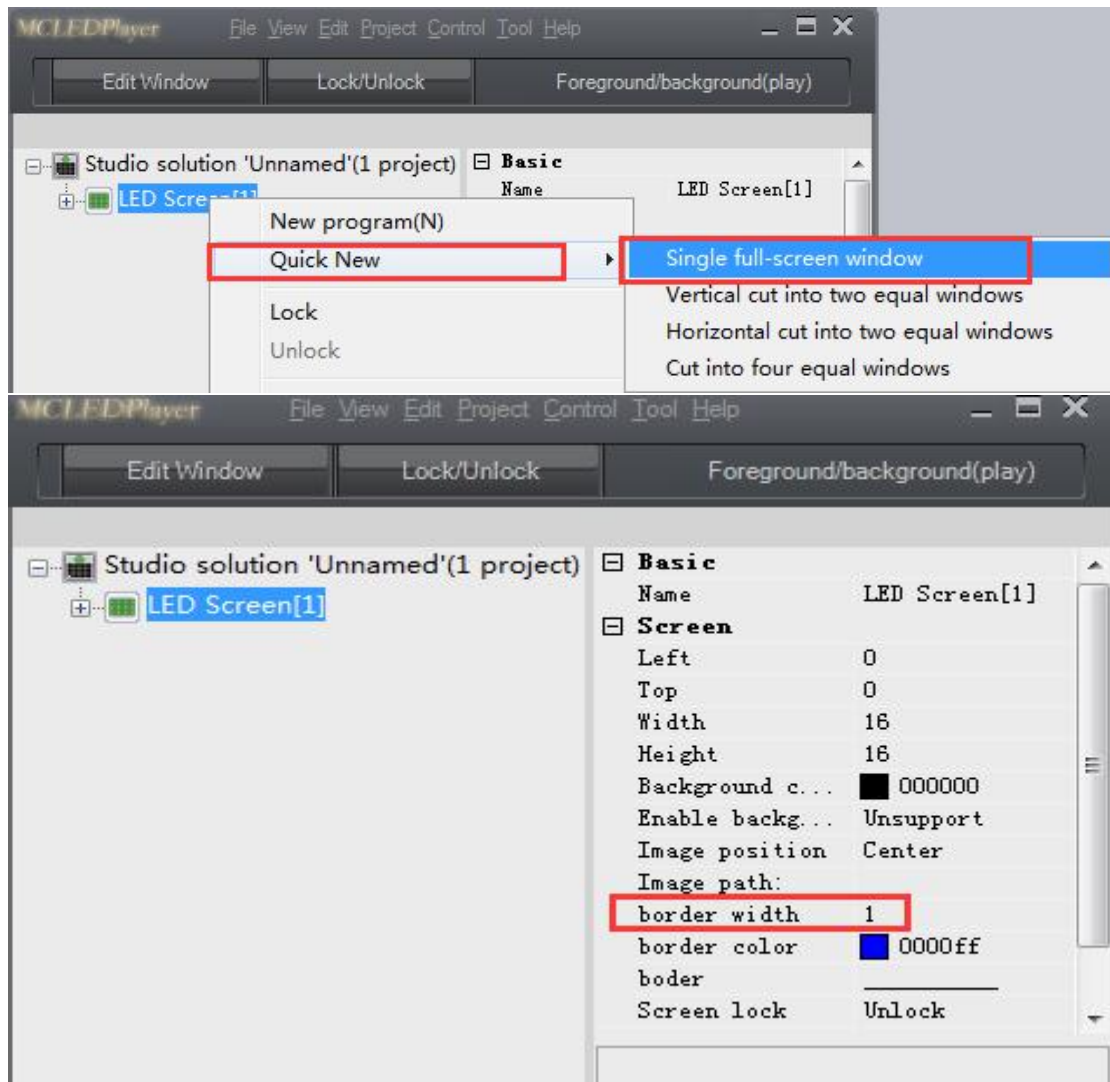


2 Create a new Video play mode

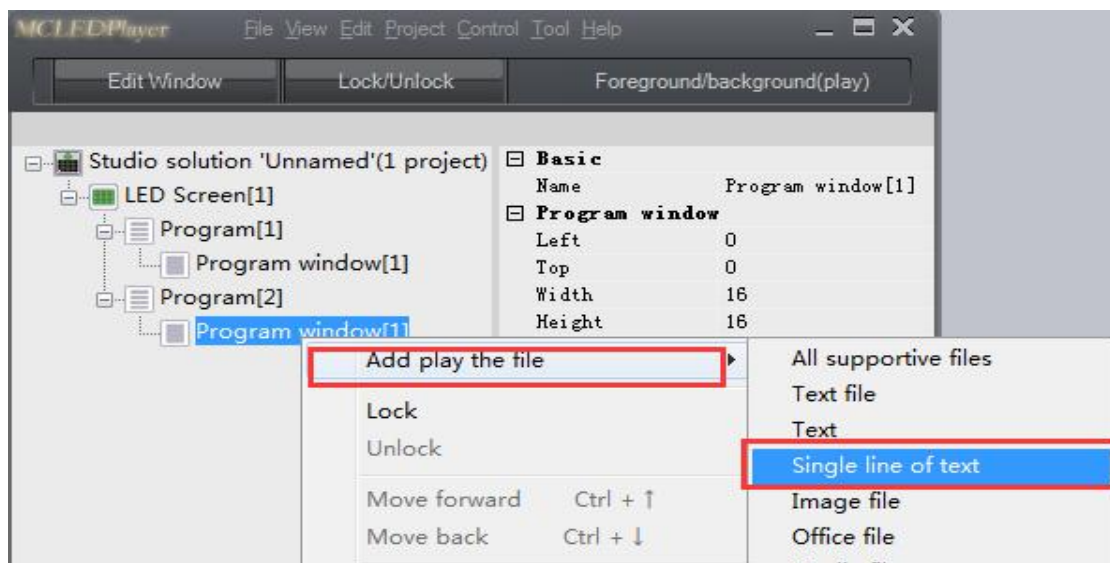
2.1 Click the 'File' menu, select the button 'create screen automatically', to create a screen, whose size is the same as driver file.



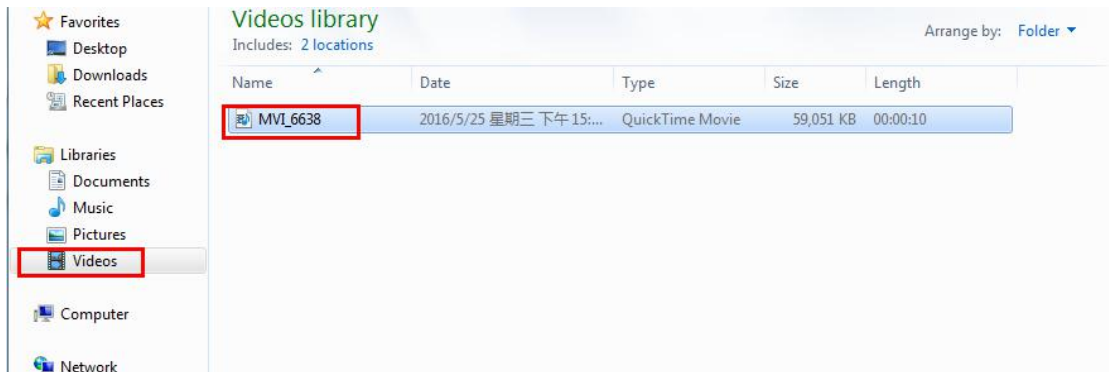
2.2 Right click 'LED screen' - 'Quick new' - 'Single full-screen window', then a new play window was created, and adjust the border width to zero, if you need not the frame.



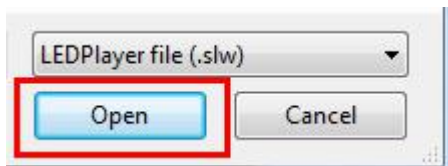
2.3. Right click 'program window' '-Add play the file'-'all supportive files'.



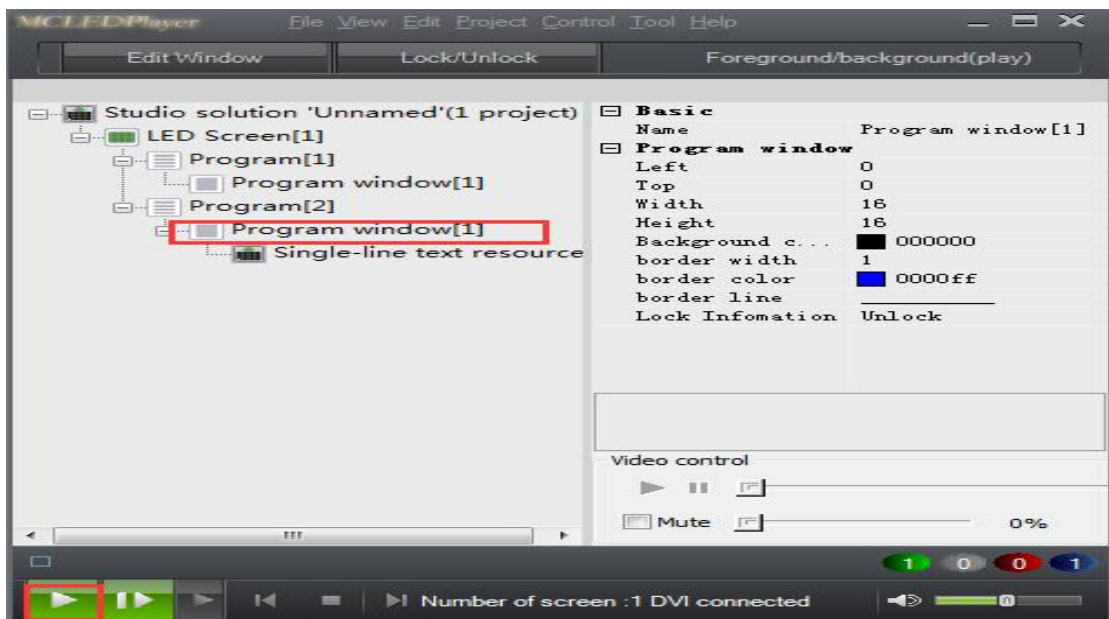
2.4 Find the play path of the program is going to play on the dialog box that pops out. Open the Video, after you choosing it.



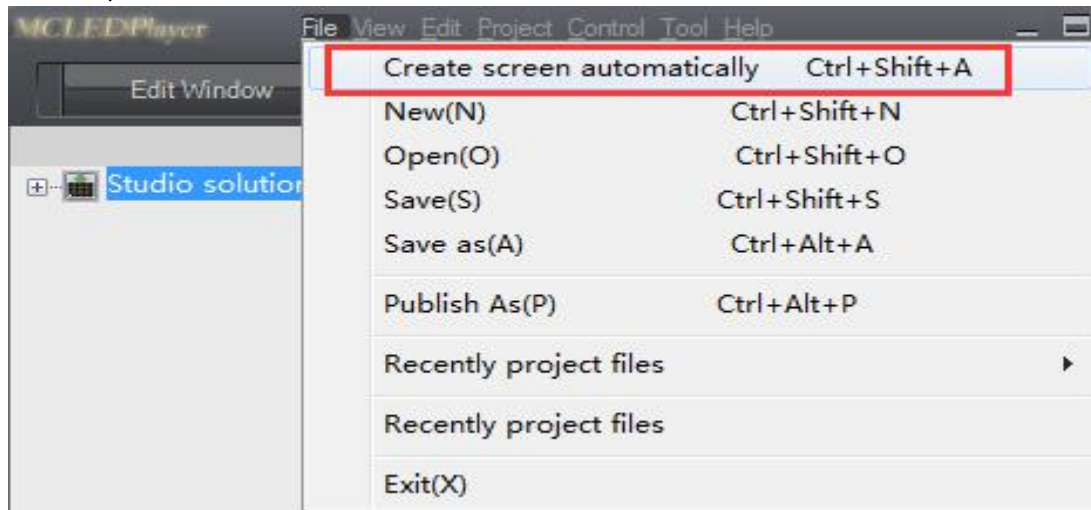
2.5 Click 'Open', the video plays, after you open the file.



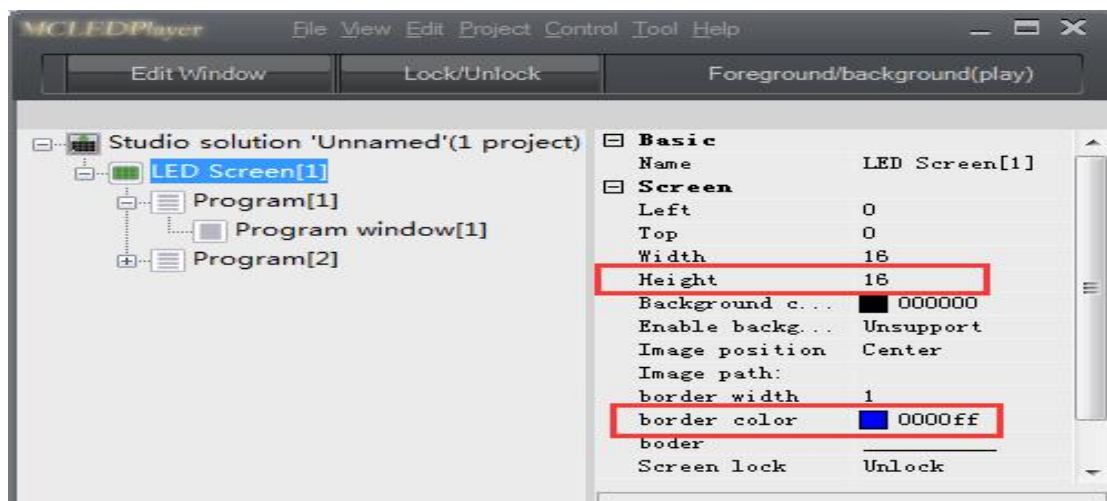
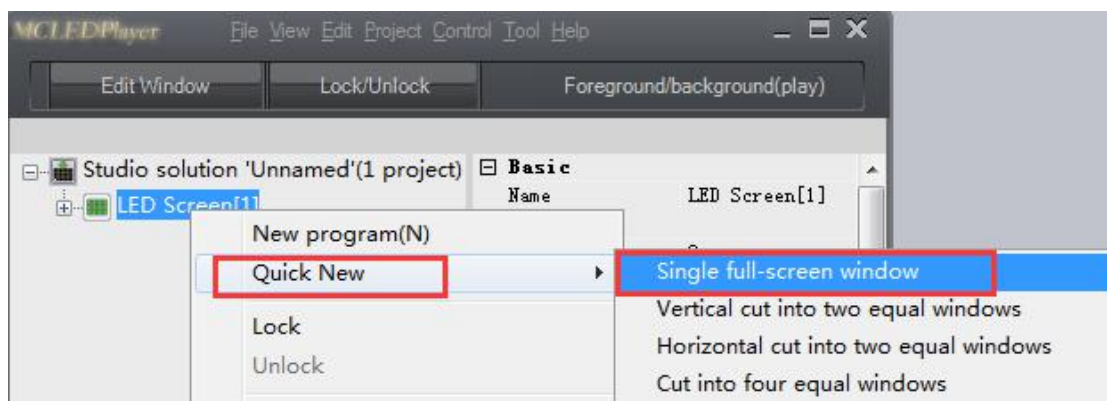
3 Create a new file +a new video play mode



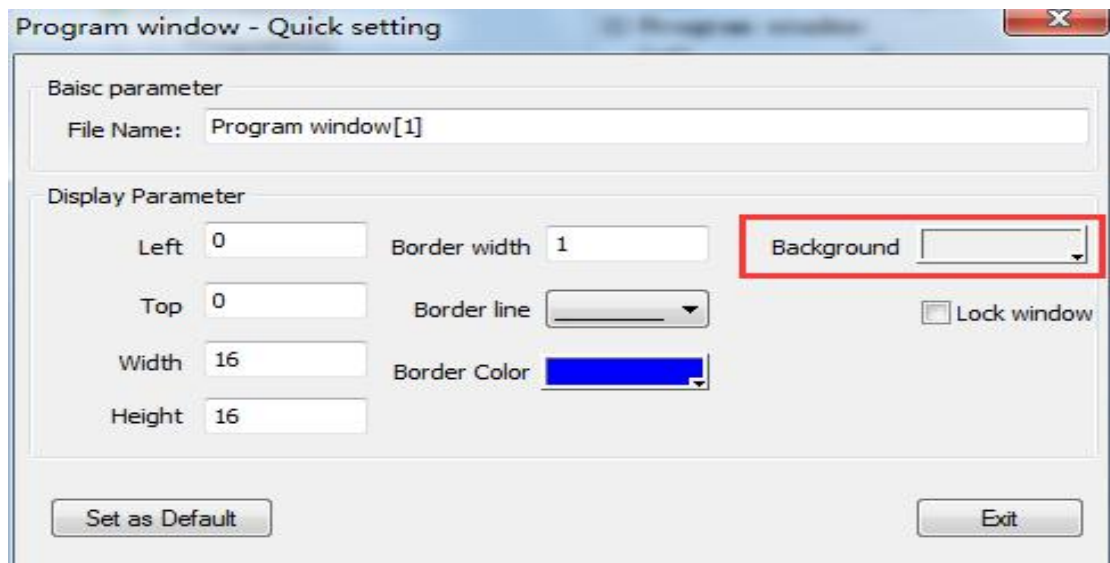
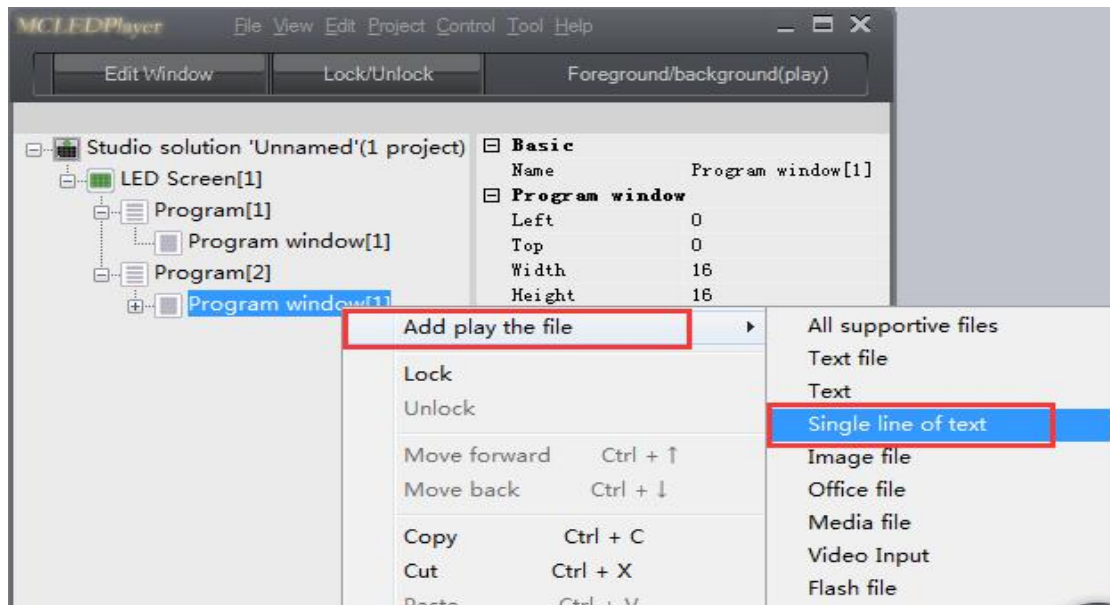
3.1 Click the 'File' menu select 'create screen automatically', to create a screen, whose size is the same as driver file.



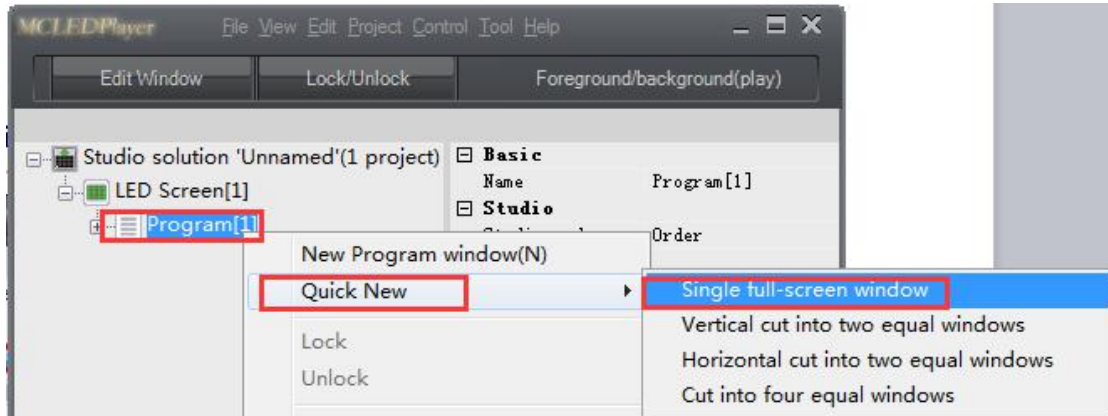
3.2 Right click the 'LED screen'-'Quick new'-'single full-screen window' to create a new play window. The Height of the new created play window can be set as required, the common height usually is about 60, and if needed, the border width can be 0.



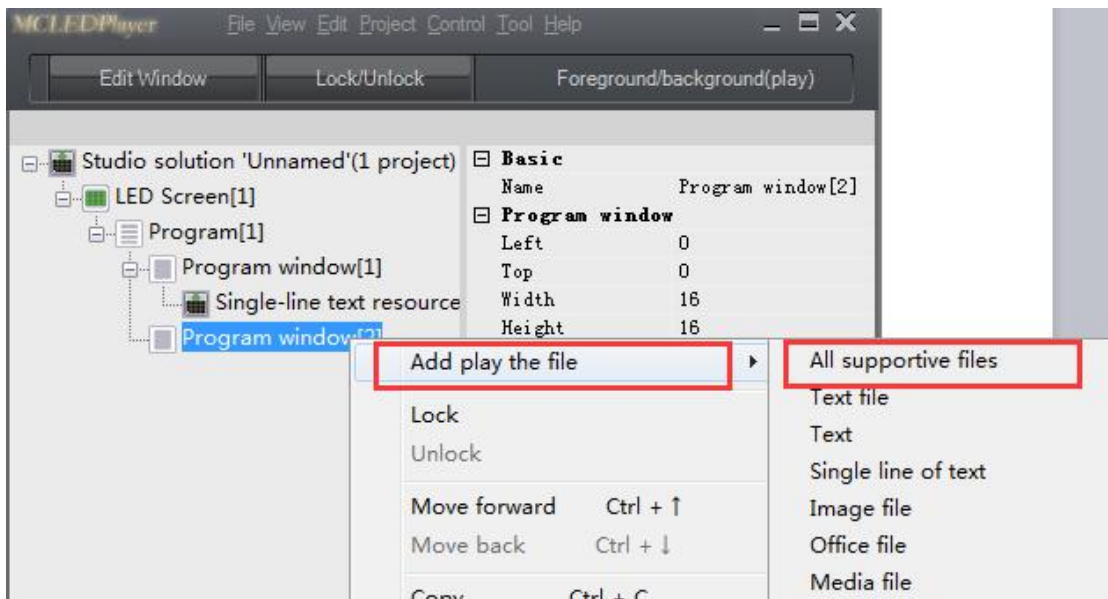
3.3 Right click 'Program window'-'Add play the file'-'Single line of text' then right click single line of text, select 'Property' or 'Quick setting' as you need. Please pay attention the background must be 'transparent background', than you could exit.



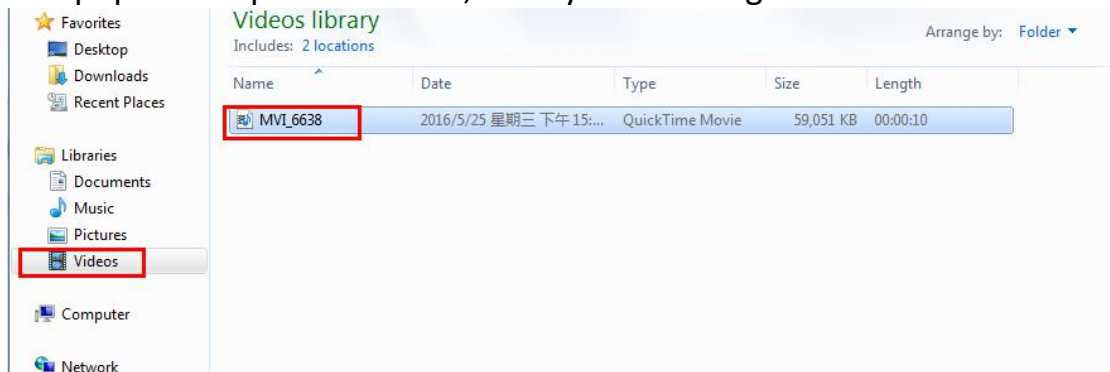
3.4 Right click 'Program 1'-'Quick new'-'Single full-screen window', to create a new play window 'Program 2'.



3.5 New created play window 'Program 2'-'Add play file'-'All supportive files'.



3.6 Find the play path of the program is going to play on the dialog box that pops out. Open the Video, after you choosing it.



3.7 Click 'Open', the video plays, after you open the file.

