

Receiving Card VCSG3-V23D Specs

一. Product Introduction

Mooncell VCSG3-V23D is a Universal Receiving Card.

二. Product Features:

1. It conventionally has 16 sets of RGB Output, which can be extended to 32 Sets.
2. The maximum output of the RGB is 21 sets
3. One single card Connection in series can get 64sets of RGB output, which can be extended to 128
4. The maximum pixel that one can could load is 64K, each set of the data could load 8k pixel.
5. Input voltage: 3.5V--6V
6. High Refresh rate, high brightness and high gray grade with common IC (Driver).
7. Dual backup for the network Cable
8. To get the single pixel calibration without decreasing the pixel load area
9. Variety of Drivers are supported. It supports PWM IC, Point by point Detecting IC and Conventional IC.
10. It supports to save the settings beforehand.
11. It supports to monitor all the parameters of the receiving card.
12. It supports to monitor the environment.

13. Intelligent recovery function, swapping the receiving cards without the need of loading all the data again.

14. Companied with Mooncell Intelligent Power Supply (two power supplies as in parallel connection, Sharing current, short-circuit protection) you will never ever get black screen.

15. It conforms to the RoHs and CE-EMC Standards.

二. The definition of the output port

Definitions of Two 50P Ports:

JP1 Port-50P-Defination				JP2 Port-50P-Defination			
Pin No.	Definition	Pin No.	Definition	Pin No.	Definition	Definition	Pin No.
1	GND	2	VCC	1	GND	VCC	2
3	GND	4	VCC	3	GND	VCC	4
5	GND	6	E/DECHA	5	GND	E/DECHA	6
7	DATA31	8	DATA30	7	DATA63	DATA62	8
9	DATA29	10	DATA28	9	DATA61	DATA60	10
11	DATA27	12	DATA26	11	DATA59	DATA58	12
13	DATA25	14	DATA24	13	DATA57	DATA56	14
15	DATA23	16	DATA22	15	DATA55	DATA54	16
17	DATA21	18	DATA20	17	DATA53	DATA52	18
19	DATA19	20	DATA18	19	DATA51	DATA50	20
21	DATA17	22	DATA16	21	DATA49	DATA48	22
23	DATA15	24	DATA14	23	DATA47	DATA46	24
25	DATA13	25	DATA12	25	DATA45	DATA44	26

27	DATA11	28	DATA10	27	DATA43	DATA42	28
29	DATA9	30	DATA8	29	DATA41	DATA40	30
31	DATA7	32	DATA6	31	DATA39	DATA38	32
33	DATA5	34	DATA4	33	DATA37	DATA36	34
35	DATA3	36	DATA2	35	DATA35	DATA34	36
37	DATA1	38	DATA0	37	DATA33	DATA32	38
39	D	40	C	39	D	C	40
41	B	42	A	41	B	A	42
43	LAT	44	CLK	43	LAT	CLK	44
45	OE	46	GND	45	OE	GND	46

47	VCC	48	GND	47	VCC	GND	48
49	VCC	50	GND	49	VCC	GND	50

Note :

- 1.E/DECHA Signal, it could be used as the blanking control when the display scan line less than 16, and it will be the E Signal while that's more than 16.
- 2.Pin No.7-38 of the JP1 and JP2 are for data output and it could be user-defined.

The definition of universal 16 sets data output

JP1 Port-50P-Defination				JP2 Port-50P-Defination			
Pin No.	Definition	Pin No.	Definition	Pin No.	Definition	Definition	Pin No.

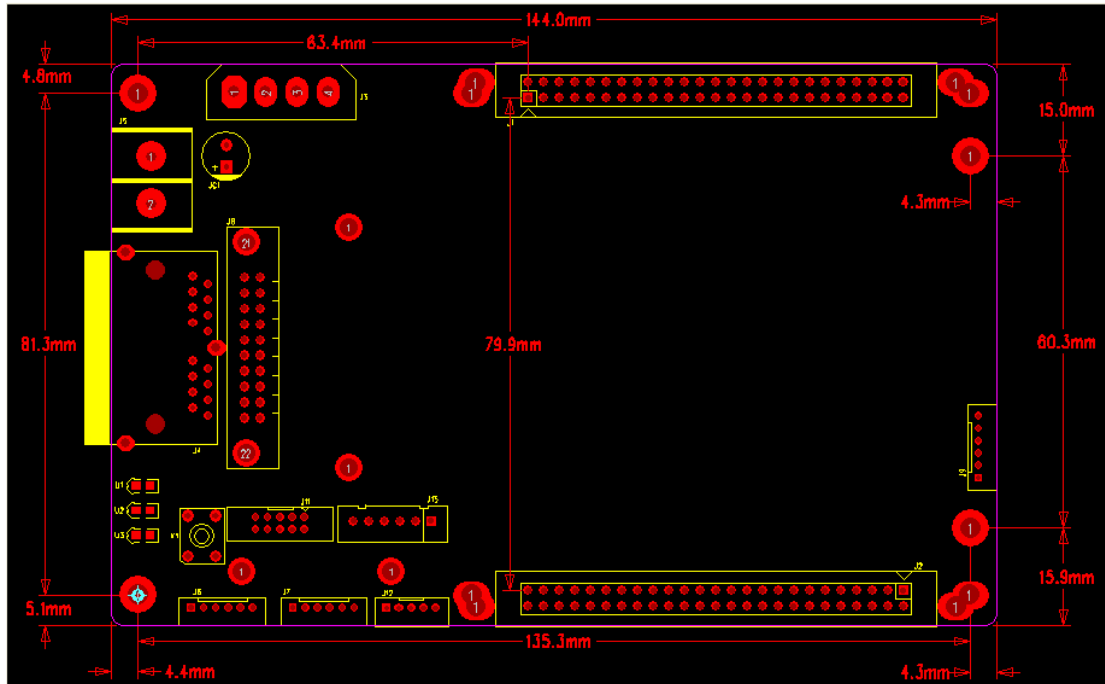
1	GND	2	VCC	1	GND	VCC	2
3	GND	4	VCC	3	GND	VCC	4
5	GND	6	E/DECHA	5	GND	E/DECHA	6
7	R8R/N	8	B8	7	R16R/N	B16	8
9	G8	10	R8	9	G16	R16	10
11	R7R/N	12	B7	11	R15R/N	B15	12
13	G7	14	R7	13	G15	R15	14
15	R6R/N	16	B6	15	R14R/N	B14	16
17	G6	18	R6	17	G14	R14	18
19	R5R/N	20	B5	19	R13R/N	B13	20
21	G5	22	R5	21	G13	R13	22
23	R4R/N	24	B4	23	R12R/N	B12	24
25	G4	26	R4	25	G12	R12	26
27	R3R/N	28	B3	27	R11R/N	B11	28
29	G3	30	R3	29	G11	R11	30
31	R2R/N	32	B2	31	R10R/N	B10	32
33	G2	34	R2	33	G10	R10	34
35	R1R/N	36	B1	35	R9R/N	B9	36
37	G1	38	R1	37	G9	R9	38
39	D	40	C	39	D	C	40
41	B	42	A	41	B	A	42
43	LAT	44	CLK	43	LAT	CLK	44
45	OE	46	GND	45	OE	GND	46
47	VCC	48	GND	47	VCC	GND	48
49	VCC	50	GND	49	VCC	GND	50

Note:

While the unit has only three lights on the LED module, the RXR/N stands for the empty Pin.

R、G、B are swap-able.

三. Size and Some Definitions



The J6 Definition

Pin No.	1	2	3	4	5	6
Definition	PO_LED+	PO_LED-	P1_LED+	P1_LED-	POW+/KEY+	POW-/KEY-

The J7 Definition

Pin	1	2	3	4	5	6
Definition	+5V	GND	SDA	GND	SCL	+5V

The J12 Definition

Pin	1	2	3	4	5
Definition	GND/KEY-	KEY+	POW_LED (R)-	+3.3V/LED+	STA_LED (G) -

The J13 Definition

Pin	1	2	3	4	5	6
Definition	KEY+	KEY-	POW_LED+	POW_LED-	STA_LED+	STA_LED-

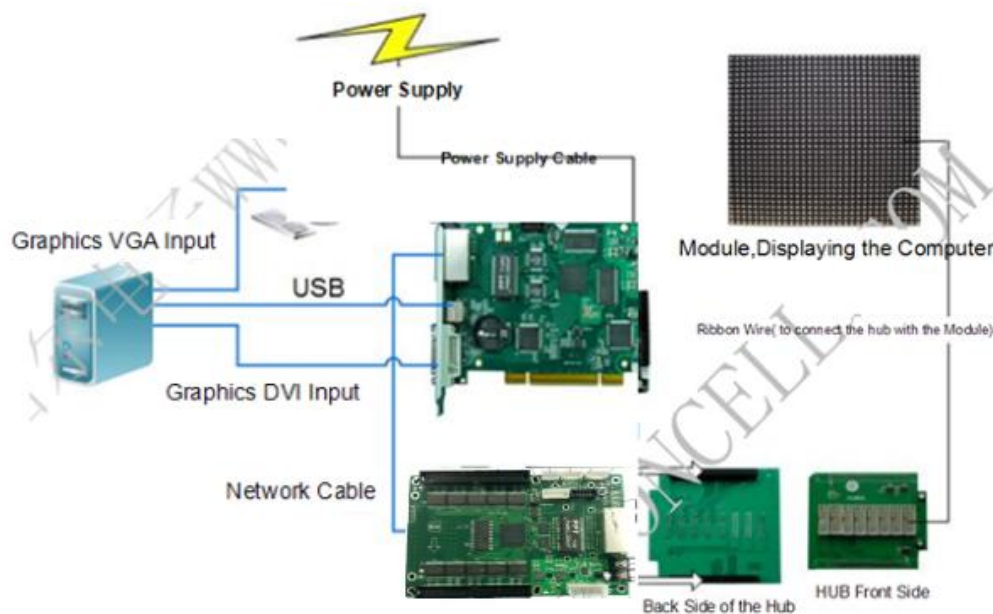
The J8 Definition

Pin	2	4	6	8	10	12	14	16	18	20
Definition	A0+	B0+	C0+	D0+	NC	NC	A1+	B1+	C1+	D1+
Pin	1	3	5	7	9	11	13	15	17	19
Definition	A0-	B0-	C0-	D0-	NC	NC	A1-	B1-	C1-	D1-

The J11 Definition

	Single-Mode Optical Fiber: 10km	
Some other Performances	10b Video Source, OE Protection, LED Display Self-Detecting	
Working Current	1.0A	1.0A
Protecting Current	3.0A	
Working Temperature	-10°C-65°C	
Extreme Working Temperature	-20°C-75°C	
Working Humidity	0%-95%	

六. Connection



八. Packing Content

1. One Receiving Card, Anti-static Bubble Bag
2. 100PCS as in one Carton

九. Attentions

1. Please follow the Instructions for the standard Operation.
2. Professionals are needed to install and test the product, and it has to be

anti-static.

3. Keep away from water.