

Receiving Card VCSG3-V52A Specs

I .Product Introduction

Mooncell VCSG3-V52A is a Universal Receiving Card, with the following features :

1. The maximum output of the RGB are 20 sets.
2. One single card Connection in series can get 60sets of RGB output, which can be extended to 120.
3. One card can load the maximum 64K pixel, each set of the data 8k.
4. Input voltage: 3.5V--6V.
5. High Refresh rate, high brightness and high gray grade with universal IC(Driver).
6. Dual backup for the network Cable.
7. Supporting brightness, color correction by single pixel, without reducing the load cassette receiving area.
8. Variety of Drivers are supported. It supports PWM IC, Point by point Detecting IC and Conventional IC.
9. Supports receiving card stored picture settings before hand.
10. Monitoring all the parameters of the receiving card.
11. Monitor the external environment.
12. Intelligent recovery function, swapping the receiving cards without loading all the data again.
13. Screen never black. Companied with Mooncell Intelligent Power Supply(two power, supplies as in parallel, equalized current, short-circuit protection) you will never ever get black screen.
14. It confirms to RoHs and CE-EMC standards.

II.The definition of the output port

Definitions of Four 26P Ports:

JP2	
A_2	1
B_2	2
OE_2	3
LAT_2	4
CLK_2	5
SV	6
C_2	7
D_2	8
E_2	9
OUT15	10
OUT16	11
OUT17	12
GND	13
OUT18	14
OUT19	15
OUT20	16
OUT21	17
OUT22	18
OUT23	19
GND	20
OUT24	21
OUT25	22
OUT26	23
OUT27	24
OUT28	25
OUT29	26

JP1	
A_1	1
B_1	2
OE_1	3
LAT_1	4
CLK_1	5
SV	6
C_1	7
D_1	8
E_1	9
OUT0	10
OUT1	11
OUT2	12
GND	13
OUT3	14
OUT4	15
OUT5	16
OUT6	17
OUT7	18
OUT8	19
GND	20
OUT9	21
OUT10	22
OUT11	23
OUT12	24
OUT13	25
OUT14	26

JP3	
A_3	1
B_3	2
OE_3	3
LAT_3	4
CLK_3	5
SV	6
C_3	7
D_3	8
E_3	9
OUT30	10
OUT31	11
OUT32	12
GND	13
OUT33	14
OUT34	15
OUT35	16
OUT36	17
OUT37	18
OUT38	19
GND	20
OUT39	21
OUT40	22
OUT41	23
OUT42	24
OUT43	25
OUT44	26

JP4	
A_4	1
B_4	2
OE_4	3
LAT_4	4
CLK_4	5
SV	6
C_4	7
D_4	8
E_4	9
OUT45	10
OUT46	11
OUT47	12
GND	13
OUT48	14
OUT49	15
OUT50	16
OUT51	17
OUT52	18
OUT53	19
GND	20
OUT54	21
OUT55	22
OUT56	23
OUT57	24
OUT58	25
OUT59	26

Note :

1.E Signal, it could be used as the blanking control when the display scan line less than 16, and it will be the E Signal while that's more than 16.

2.Pin No.7-38 of the JP1 and JP2 are for data output and it could be user-defined.

1、 The definition of universal 20 sets data output

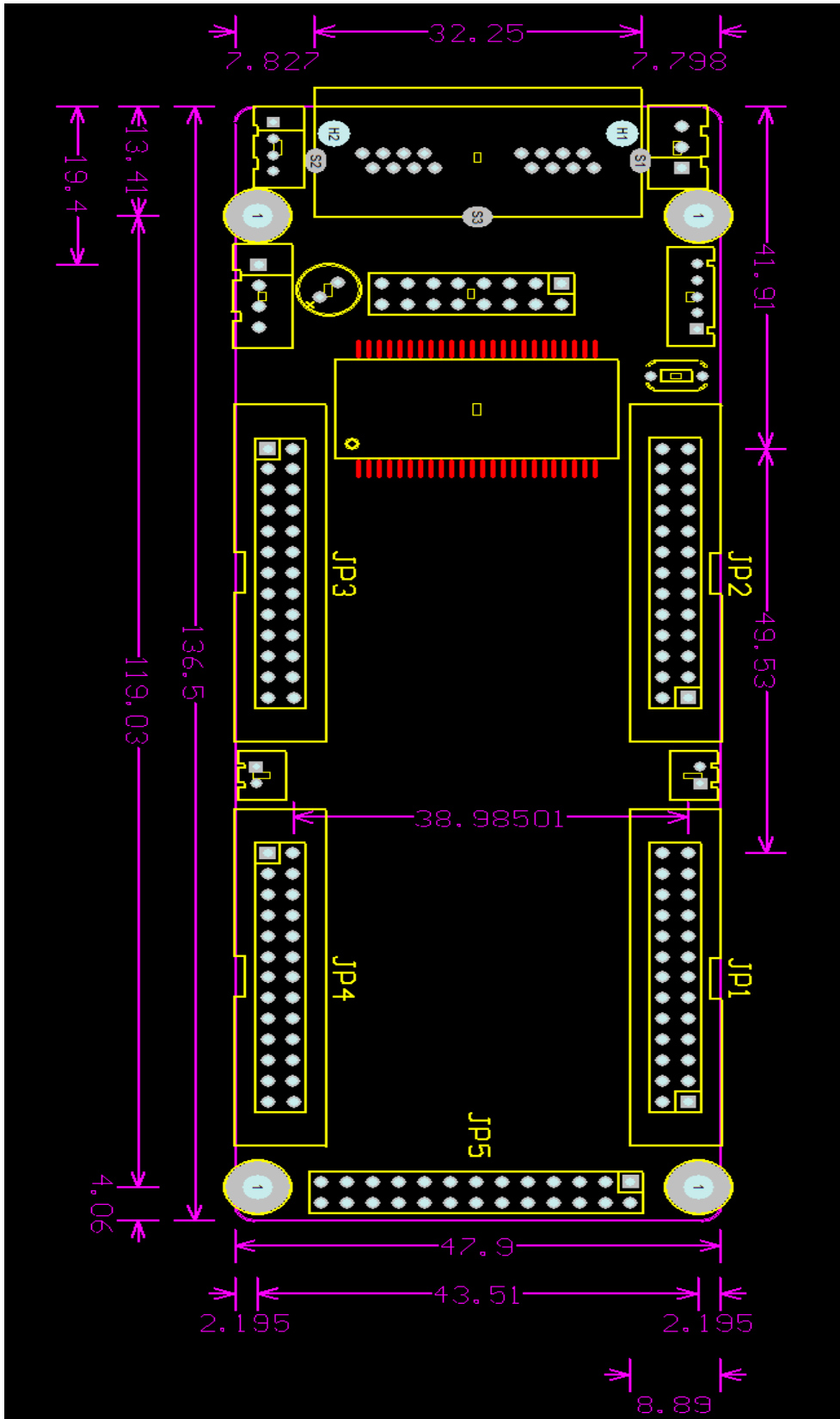
JP1 port 26P Definition				JP2 port 26P Definition			
Pin No.	Definition	Pin No.	Definition	Pin No.	Definition	Pin No.	Definition
1	A	2	B	1	A	2	B
3	OE	4	LAT	3	OE	4	LAT
5	CLK	6	5V	5	CLK	6	5V
7	C	8	D	7	C	8	D
9	E	10	R1	9	E	10	R6
11	G1	12	B1	11	G6	12	B6
13	GND	14	R2	13	GND	14	R7
15	G2	16	B2	15	G7	16	B7
17	R3	18	G3	17	R8	18	G8
19	B3	20	GND	19	B8	20	GND
21	R4	22	G4	21	R9	22	G9
23	B4	24	R5	23	B9	24	R10
25	G5	26	B5	25	G10	26	B10

JP3 port 26P Definition				JP4 port 26P Definition			
Pin No.	Definition	Pin No.	Definition	Pin No.	Definition	Pin No.	Definition
1	A	2	B	1	A	2	B
3	OE	4	LAT	3	OE	4	LAT
5	CLK	6	5V	5	CLK	6	5V
7	C	8	D	7	C	8	D
9	E	10	R11	9	E	10	R16
11	G11	12	B11	11	G16	12	B16
13	GND	14	R12	13	GND	14	R17
15	G12	16	B12	15	G17	16	B17
17	R13	18	G13	17	R18	18	G18
19	B13	20	GND	19	B18	20	GND
21	R14	22	G14	21	R19	22	G19
23	B14	24	R15	23	B19	24	R20
25	G15	26	B15	25	G20	26	B20

Note:

The RGB color of the LED could be swapped.

III. Size and Connectors



1. Definition of J9

Pin No.	1	2	3	4	5
Definition	LEDG	3.3V/LED+	LEDR	KEYH	GND/KEY-

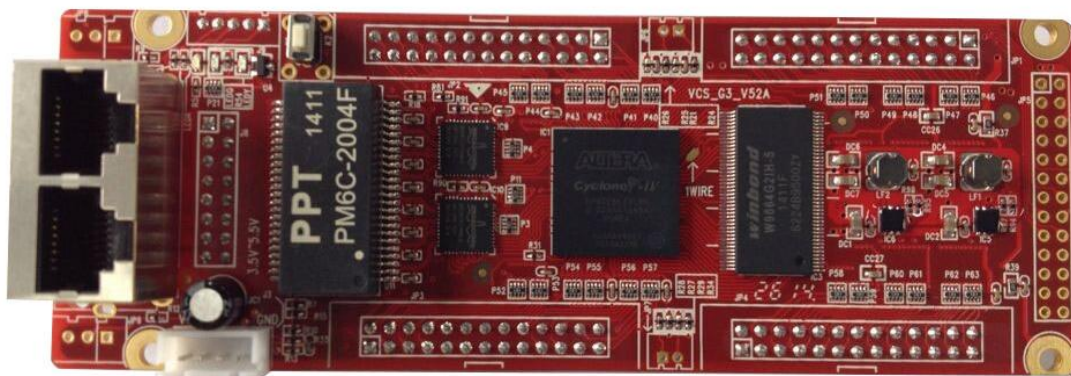
2. Definition of J8

Pin No.	2	4	6	8	10	12	14	16
Definition	A0+	B0+	C0+	D0+	A0+	B0+	C0+	D0+
Pin No.	1	3	5	7	9	11	13	15
Definition	A0-	B0-	C0-	D0-	A0-	B0-	C0-	D0-

1. Definition of J3

Pin No.	1	2	3	4
Definition	+5V	+5V	GND	GND

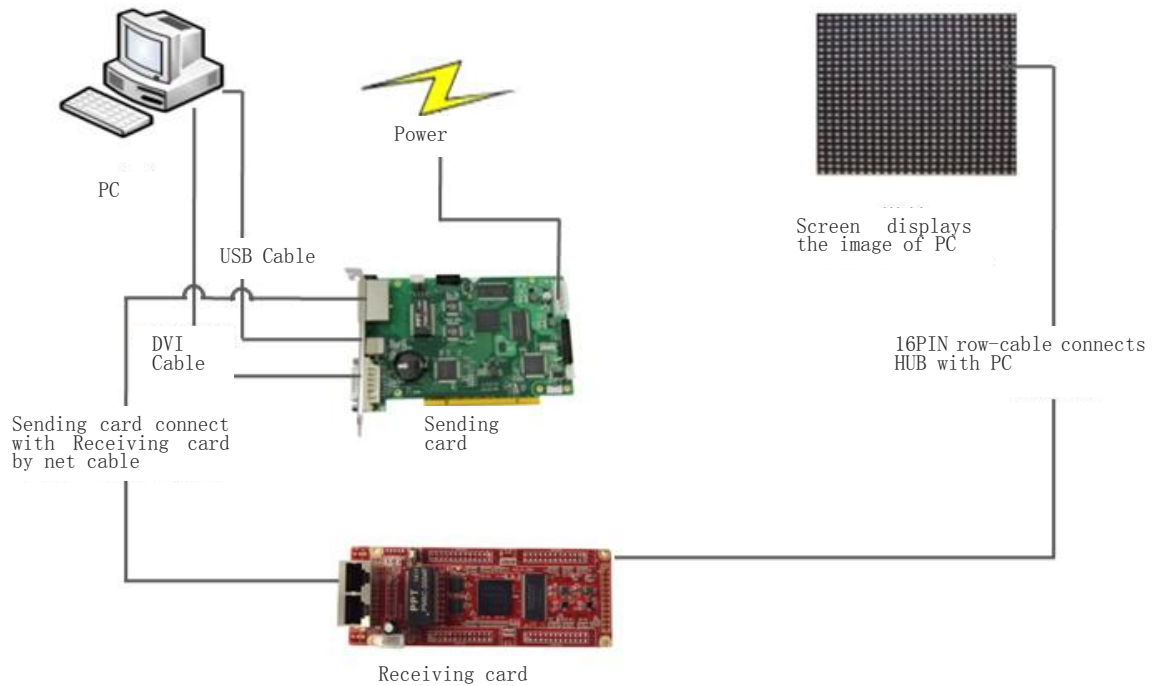
IV. Product Picture



V. Technical Parameters

Performance Options	Typical Value	Maximum Value
Supported Screen Module	Single Color/ Dual Color/ Full Color/Virtual Pixel	
Supported Receiving Card Quantity(Single Network Port, Cascading)	<100	240
Areas of Pixel Loaded for One Single Card	128*128	96K
RGB Output Group of single receiving card	20	21
Lines of One Set of RGB Driver	1/2/4/8/16/32	1~32
Optical Fiber Transmit Distance	Multi-mode Optical Fiber: 500m; Single-Mode Optical Fiber: 10km	
Some other Performances	10b Video Source, OE Protection, LED Display Self-Detecting	
Working Current	0.6A	1.0A
Protecting Current	3.0A	
Working Temperature	-10℃ - 65℃	
Extreme Working Temperature	-20℃ - 75℃	
Working Humidity	0%-95%	

VI.Connection



VII.Packing Content

1. One Receiving Card, Anti-static Bubble Bag
2. 100PCS as in one Carton

VIII.Attentions

1. Please follow the Instructions for the standard Operation.
2. Professionals are needed to install and test the product, and it has to be anti-static.
3. Keep away from water.